

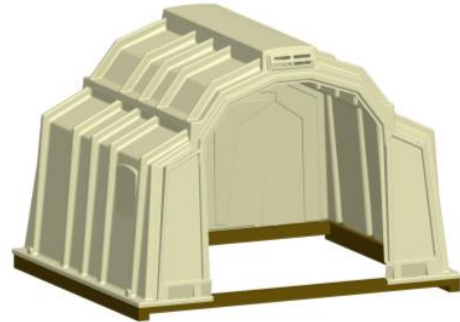


MultiMax Assembly Instructions



Thank you for buying a Calf-Tel MultiMax Hutch. We recommend that you:

1. Check you have all the fixings and equipment you need
2. Assemble the timber base
3. Assemble the MultiMax hutch
4. Attach the hutch to the base.
5. Attach reinforcing brackets and bedding door latches.



We suggest you leave the panels for a day or two after delivery to regain their natural shape before assembling them.

(if using power tools do not over-tension)

1. Equipment

You will need:

- Drill with 6mm and 8mm bit
- 8mm socket and spanner, 11mm and 17mm sockets
- Cross head screwdriver
- **A helper for stage 3**

You should have received the following components from us:

Component	Quantity
MMH Back with Rear Bedding Door	1
MMH Right Side	1
MMH Left Side	1
MMH Roof	1
MMC Timbers Front / Back 2.5m x 100mm x 100mm	2
MMC Timbers Side 2.14m x150mm x 100mm	2
MMH INS 1063A Knockdown Fixing Pack 2020 including:	1
AH-151-1 MultiMax self assembly fixing kit	1
AH-150-1 MultiMax hutch to base attachment kit	1
Timber fixing kit	1
Reinforcement bracket and CT-HDWE-037 fixings	2
CH-9225 Rear bedding door latch and fixings	2
Instructions for MultiMax Assembly	1

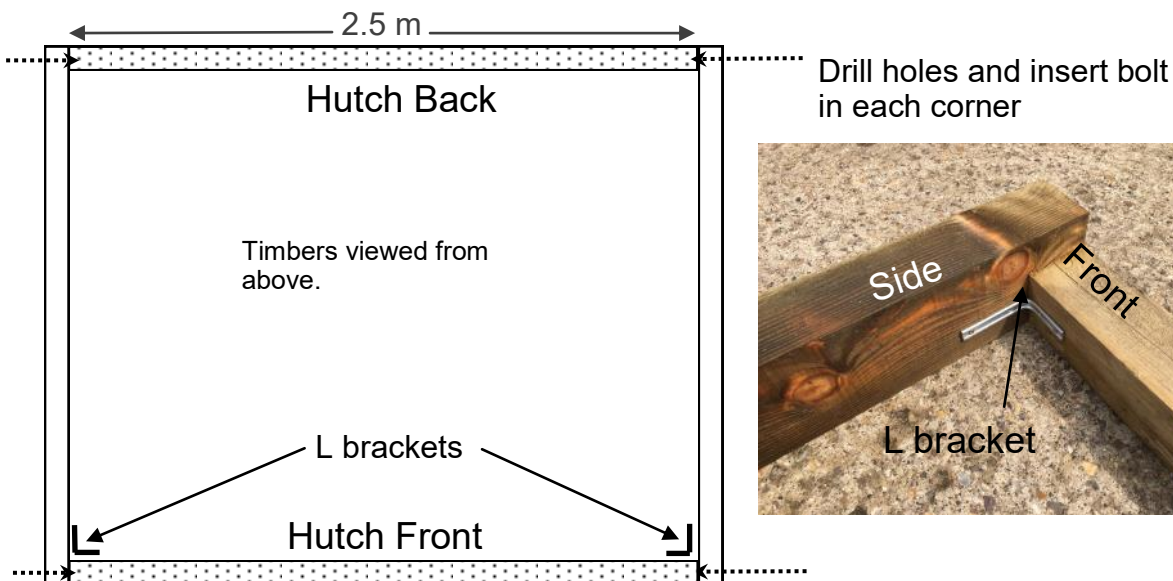
2. Assemble the timber base

The base is built upside down and then flipped over to give a level top surface for attaching the hutch. The longer, narrower pieces of timber at the front and back provide a gap to insert loader tines to move the completed hutch easily.

a) To assemble the base you will need:

- The bag of timber base fixings
- Two pieces of side timber (2.14m x 150mm x 100mm)
- Two pieces of front / back timber (2.5m x 100mm x 100mm)

b) Lay the timber components out on a flat area as shown below



c) Mark out and pre-drill one 8mm hole per corner as indicated by→

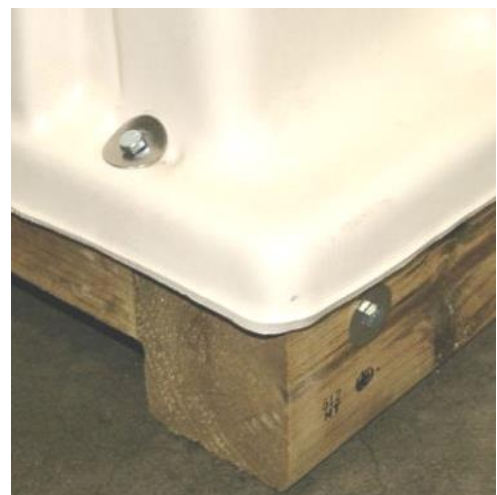
d) Slide one washer onto each bolt & insert one bolt per corner into pre-drilled holes.

e) Position L brackets against front & sides as indicated in the diagram.

f) Attach L brackets to timber with screws provided.

g) Lift and flip the base over so the upper surface is flush ready for the hutch to be lowered on.

This picture shows the finished hutch mounted on the timber.

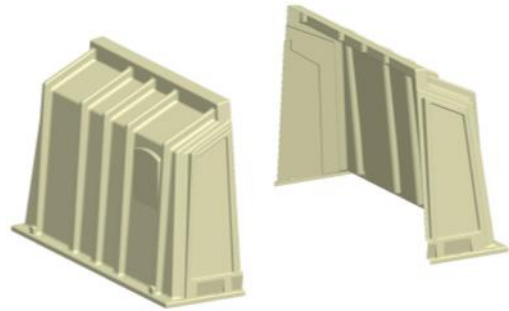


3. Assemble the MultiMax Hutch

a) You will need:

- Left and right side panels, roof and back
- Bag of hutch fixing components AH-151-1

b) Place the left and right sides of the MultiMax on the ground standing upright approx. 5 feet (1.5m) apart as shown.

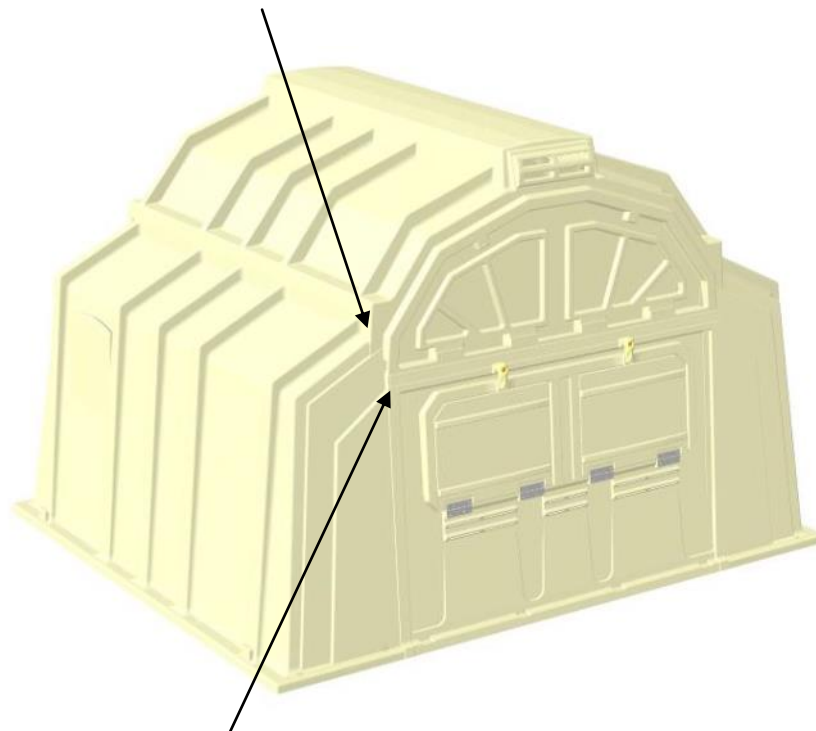


c) **Attach the back of the MultiMax to the sides.** Bolt the back onto the outside of the sides using the small bolts and back up washers starting at the top. Insert the bolt with a washer from the inside and attach a washer and nut from the outside.

d) **Attach the roof.** Put the roof over the back and sides. The sides should be adjusted so the ribs on the roof line up with the ribs on the sides. Bolt the roof to the sides starting at the back. Insert a bolt with a washer from the inside and attach a washer and nut from the outside.

e) Occasionally the pre-drilled holes in the sides are missing or do not line up and will need to be re-drilled with a 6mm drill bit using the holes in the top and back as a template.

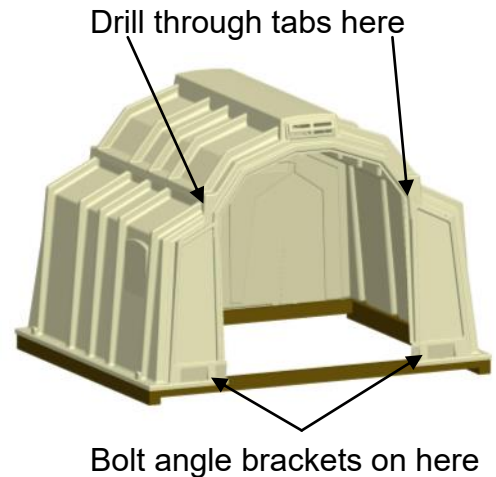
Start attaching roof here: 5 bolts per side. Save 2 bolts per side to attach through tabs at front in stage 5.



Start attaching back here: 8 bolts on each side and 9 across the top.

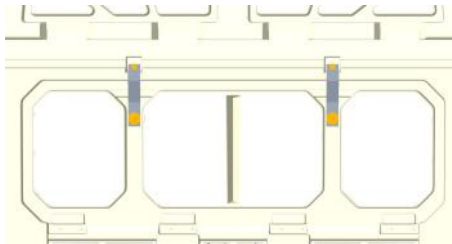
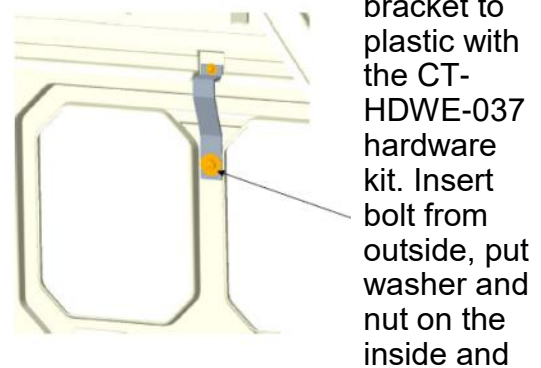
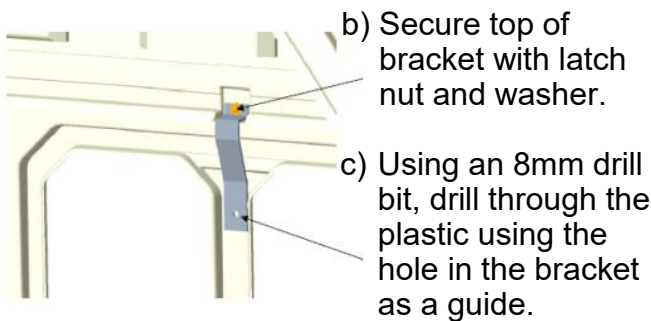
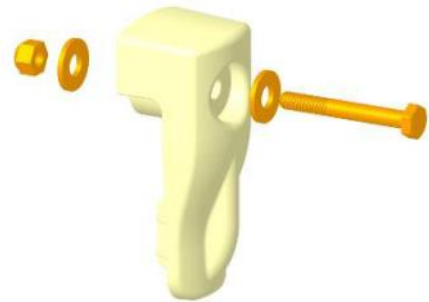
4. Attach the Hutch to the Base

- You will need the bag of hutch to base components AH-150-1
- Put the hutch on the base with the front opening at the front of the base nearest the L brackets.
- Fasten the hutch to the base around the edge using washers and screws starting at the back corner and going across the back first.
- Fasten the two angle brackets near the entrance as shown to secure the hutch to the base.
- Drill through the two tabs in the roof as indicated and bolt the roof to the sides at the front.



5. Attach the reinforcement brackets and rear bedding door latches

- You will need two bedding door latches and fixings and two reinforcement brackets and fixings.
- Assemble the bedding door latch by pushing the bolt through from the outside. On the inside, attach the top of the reinforcement bracket as shown and secure with the latch nut and washer.



Intershape Ltd

Michaelmas House, Royal Oak Way North, Daventry, NN11 8PQ

Tel: 01327 300 395

Email: sales@intershape.com Web: www.intershape.com